

# PK 15002

*Performance*

**PALFINGER**



FLEXIBILITY AND EFFICIENCY  
ARE ITS STRENGTHS





## IT PROVES ITS RELIABILITY IN CONTINUOUS SERVICE ON THE CONSTRUCTION SITE

Whether in the municipal sector, handling building materials or on the construction site, the PK 15002 *Performance* is your reliable partner. Easy maintenance, quality and reliability are the result of decades of research and development. PALFINGER proves this with the thoughtfully designed technical details such as the proven Power Link System, the new Functional Design Package and other technical highlights.





# THE PK 15002 *PERFORMANCE* UNDERLINES THE INNOVATIVE PROWESS OF PALFINGER

## Return oil use

By using of the return oil flow in the extension system, the operating speed is increased by 30 per cent.



## Hose equipment for accessories

With this option you can provide the oil supply to accessories. The hoses are routed in compact troughs and plastic link chains. They are thus optimally protected.



## Internally routed oil ducts

On the multiple extensions there are no hydraulic hoses between the cylinders. The internally routed oil passages make it possible to have a compact boom design.



## Extension system

The extension cylinders are guided in Jordal rails over rollers.



## Height compensation

## Optional

- The PALFINGER radio control system with digital data transmission
- The PALTRONIC 50 electronic control system
- The hydraulic overload safety device
- Hose equipment for accessories

## Functional Design

- Enclosure in the area of the control valve
- Enclosure of the hoses behind the crane column
- Spiral tube hose between base frame and crane column





## WELL SUPPORTED BY MORE THAN 1400 PALFINGER CONTRACT PARTNERS WORLDWIDE

### Ergonomic crane control

The operating levers for all crane functions are ergonomically arranged on the control console. This provides comfortable, efficient working. The control console is positioned so that it is easy to service.



### Load-holding valves

They prevent the crane boom from dropping and are fitted as standard on both lifting and extension cylinders. The valves are positioned in such a way that they are protected from accidental damage.



### Control valve

It functions proportionally, is ergonomically arranged and the low leverage force permits very sensitive crane control.

### Central lubrication

For all bearings on the base frame.

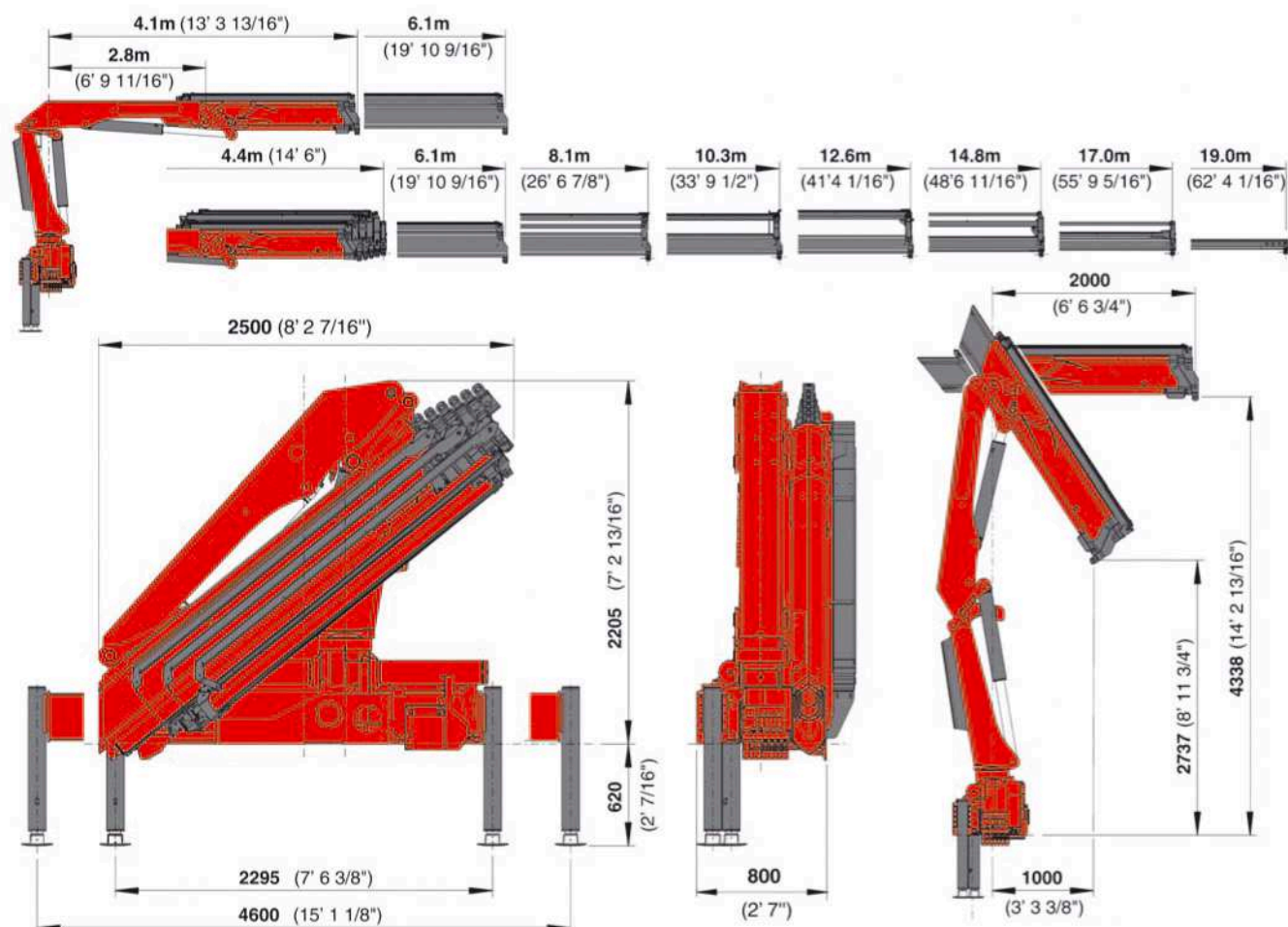


### Outrigger widths

The PK 15002 Performance fits to all normal truck chassis designs. Three outrigger widths are possible: 4.6 m (15'1") mechanical, 5.6 m (18'4") respectively 6.6 m (21'8") hydraulic.



# A REAL PALFINGER, INCORPORATING DECADES OF PRACTICAL EXPERIENCE!



## PK 15002 Performance

### Technical specifications (DIN 15018 H1-B3)

|                         |                   |               |
|-------------------------|-------------------|---------------|
| Max. lifting moment     | 13.9 mt/136.4 kNm | 100570 ft.lbs |
| Max. lifting capacity   | 6200 kg/60.8 kN   | 13670 lbs     |
| Max. hydraulic outreach | 17.0 m            | 55' 9"        |
| Maximum outreach        | 0.0 m             | 0' 0"         |
| Slewing angle           | 420°              |               |

## PK 15002 Performance

### Standard crane

|  |                 |                                     |
|--|-----------------|-------------------------------------|
| Slewing torque                                     | 1.8 mt/17.7 kNm | 13050 ft.lbs                        |
| Stabilizer spread standard                         | 4.6 m           | 15' 1"                              |
| Stabilizer spread maximum                          | 6.6 m           | 21' 8"                              |
| Fitting space required                             | 0.80 m          | 2' 7"                               |
| Width folded                                       | 2.5 m           | 8' 2"                               |
| Operating pressure                                 | 300 bar         | 4350 psi                            |
| Recommended pump capacity                          | from 40 l/min.  | 8.8 imp.gal./min. 10.6 US gal./min  |
| by radio remote control and LS-System              | to 60 l/min.    | 13.2 imp.gal./min. 15.9 US gal./min |
| Dead weight (without mounting parts, pump and oil) | 1647 kg         | 3630 lbs                            |

Executions shown in the leaflet are not always corresponding to standard execution.  
Country-specific regulations are to be observed upon attachment.



We reserve the right to change design and specification without prior notice.

[www.palfinger.com](http://www.palfinger.com)

05/01

Courtesy of CraneMarket.com

# THE PK 15002 PERFORMANCE ALREADY MEETS THE REQUIREMENTS OF THE FUTURE EN 12999 CRANE STANDARD

## Max. lifting capacities

| PK 15002 Performance |          |        |           |  |
|----------------------|----------|--------|-----------|--|
| hydraulic            |          |        |           |  |
| Outreach             | Capacity |        |           |  |
| 1.6 m                | 6200 kg  | 5' 3"  | 13670 lbs |  |
| 4.3 m                | 3210 kg  | 14' 1" | 7080 lbs  |  |
| 5.9 m                | 2350 kg  | 19' 4" | 5180 lbs  |  |

| PK 15002 Performance A |          |         |           |  |
|------------------------|----------|---------|-----------|--|
| hydraulic              |          |         |           |  |
| Outreach               | Capacity |         |           |  |
| 2.0 m                  | 6100 kg  | 6' 7"   | 13450 lbs |  |
| 4.3 m                  | 3130 kg  | 14' 1"  | 6900 lbs  |  |
| 5.9 m                  | 2210 kg  | 19' 4"  | 4870 lbs  |  |
| 7.9 m                  | 1640 kg  | 25' 11" | 3620 lbs  |  |

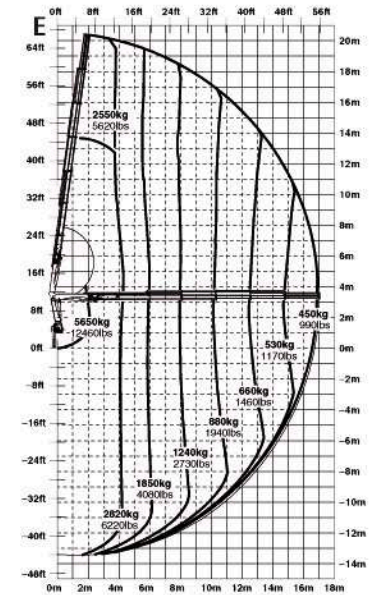
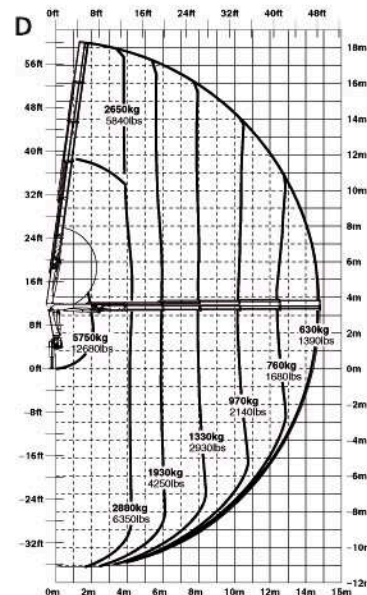
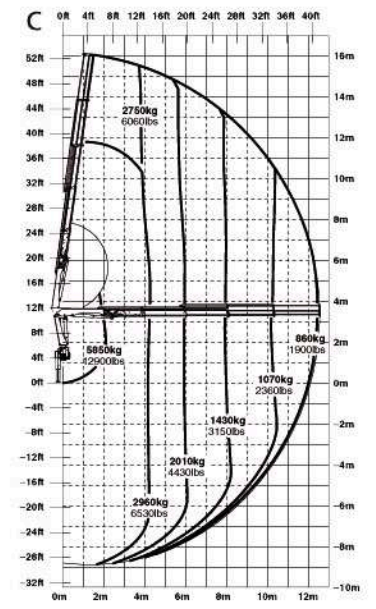
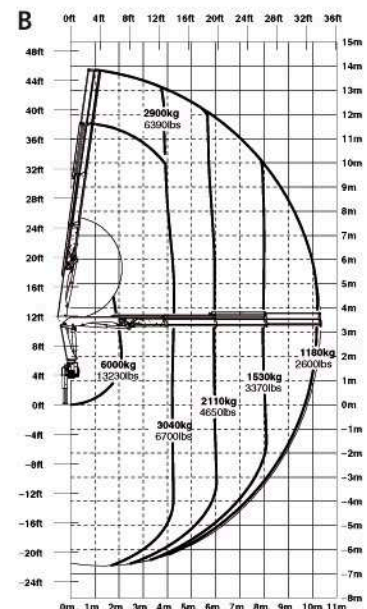
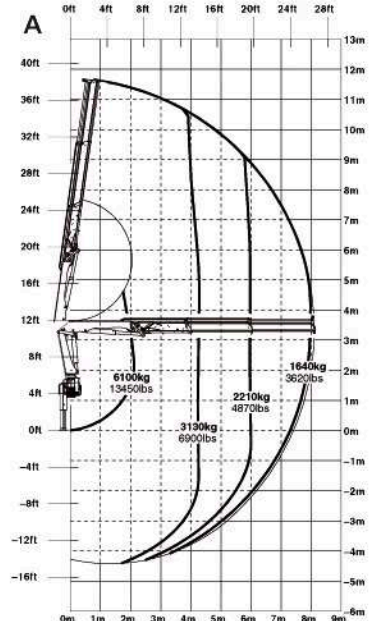
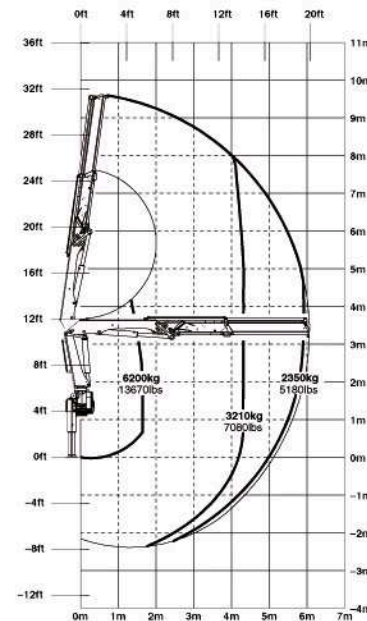
| PK 15002 Performance B |          |         |           |  |
|------------------------|----------|---------|-----------|--|
| hydraulic              |          |         |           |  |
| Outreach               | Capacity |         |           |  |
| 2.0 m                  | 6000 kg  | 6' 7"   | 13230 lbs |  |
| 4.3 m                  | 3040 kg  | 14' 1"  | 6700 lbs  |  |
| 5.9 m                  | 2110 kg  | 19' 4"  | 4650 lbs  |  |
| 7.9 m                  | 1530 kg  | 25' 11" | 3370 lbs  |  |
| 10.2 m                 | 1180 kg  | 33' 6"  | 2600 lbs  |  |
| manual                 |          |         |           |  |
| 12.4 m                 | 900 kg   | 40' 8"  | 1980 lbs  |  |
| 14.6 m                 | 700 kg   | 47' 11" | 1540 lbs  |  |
| 16.8 m                 | 570 kg   | 55' 1"  | 1260 lbs  |  |

| PK 15002 Performance C |          |         |           |  |
|------------------------|----------|---------|-----------|--|
| hydraulic              |          |         |           |  |
| Outreach               | Capacity |         |           |  |
| 2.0 m                  | 5850 kg  | 6' 7"   | 12900 lbs |  |
| 4.3 m                  | 2960 kg  | 14' 1"  | 6530 lbs  |  |
| 5.9 m                  | 2010 kg  | 19' 4"  | 4430 lbs  |  |
| 7.9 m                  | 1430 kg  | 25' 11" | 3150 lbs  |  |
| 10.2 m                 | 1070 kg  | 33' 6"  | 2360 lbs  |  |
| 12.4 m                 | 860 kg   | 40' 8"  | 1900 lbs  |  |
| manual                 |          |         |           |  |
| 14.6 m                 | 680 kg   | 47' 11" | 1500 lbs  |  |
| 16.8 m                 | 550 kg   | 55' 1"  | 1210 lbs  |  |
| 18.8 m                 | 460 kg   | 61' 8"  | 1010 lbs  |  |

| PK 15002 Performance D |          |         |           |  |
|------------------------|----------|---------|-----------|--|
| hydraulic              |          |         |           |  |
| Outreach               | Capacity |         |           |  |
| 2.0 m                  | 5750 kg  | 6' 7"   | 12680 lbs |  |
| 4.3 m                  | 2880 kg  | 14' 1"  | 6350 lbs  |  |
| 5.9 m                  | 1930 kg  | 19' 4"  | 4250 lbs  |  |
| 7.9 m                  | 1330 kg  | 25' 11" | 2930 lbs  |  |
| 10.2 m                 | 970 kg   | 33' 6"  | 2140 lbs  |  |
| 12.4 m                 | 760 kg   | 40' 8"  | 1680 lbs  |  |
| 14.6 m                 | 630 kg   | 47' 11" | 1390 lbs  |  |
| manual                 |          |         |           |  |
| 16.8 m                 | 510 kg   | 55' 1"  | 1120 lbs  |  |
| 18.8 m                 | 420 kg   | 61' 8"  | 930 lbs   |  |

| PK 15002 Performance E |          |         |           |  |
|------------------------|----------|---------|-----------|--|
| hydraulic              |          |         |           |  |
| Outreach               | Capacity |         |           |  |
| 2.0 m                  | 5650 kg  | 6' 7"   | 12460 lbs |  |
| 4.3 m                  | 2820 kg  | 14' 1"  | 6220 lbs  |  |
| 5.9 m                  | 1850 kg  | 19' 4"  | 4080 lbs  |  |
| 7.9 m                  | 1240 kg  | 25' 11" | 2730 lbs  |  |
| 10.2 m                 | 880 kg   | 33' 6"  | 1940 lbs  |  |
| 12.4 m                 | 660 kg   | 40' 8"  | 1460 lbs  |  |
| 14.6 m                 | 530 kg   | 47' 11" | 1170 lbs  |  |
| 16.9 m                 | 450 kg   | 55' 1"  | 990 lbs   |  |
| manual                 |          |         |           |  |
| 18.8 m                 | 370 kg   | 61' 8"  | 820 lbs   |  |

## PK 15002 Performance



The reaches are indicated for a 20° main boom position and are therefore not the maximum ones.